



Is PCBs concentration variability between and within freshwater fish species explained by their contamination pathways?

C. Lopes^{a,*}, M.-E. Perga^b, A. Peretti^a, M.-C. Roger^a, H. Persat^c, M. Babut^a

^a Cemagref, UR MALY, 3 bis Quai Chauveau – CP220, F-69336 Lyon, France

^b INRA, UMR CARRTEL, 75 Avenue de Corzent, F-74203 Thonon les Bains, France

^c UMR 5023 – Laboratoire d'Ecologie des Hydrosystèmes Fluviaux (LEHF), Université Claude Bernard Lyon 1, 69221 Villeurbanne, France

ARTICLE INFO

Article history:

Received 9 February 2011

Received in revised form 21 July 2011

Accepted 4 August 2011

Available online 3 September 2011

Keywords:

Freshwater river fish

PCB contamination

Stable isotopes

Mixing model

Bayesian inference

Predictive models

ABSTRACT

Many chemical, physiological, and trophic factors are known to affect bioaccumulation of polychlorinated biphenyls (PCBs) in biota. Understanding the primary factors affecting fish contamination is critical for predicting and assessing risks to upper-trophic level consumers, including humans. Here we identify PCB contamination pathways that could explain within- and between-species variability in fish concentration levels. Three freshwater river fish species (barbel, chub and bream) were sampled at three sites along the Rhone River (France) where fish consumption is partially prohibited because of PCB levels exceeding the European health-based benchmark. The trophic position was assessed using an innovative approach based on stable isotope analyses and Bayesian inference, which takes into account both isotope data variability and parameter uncertainty. The effect of foraging habitat on fish contamination was addressed using stable isotope mixing models. The fish trophic position and PCB concentrations were found to be unrelated while the exploitation of sediment detrital carbon as a food source appeared to be a critical factor affecting fish contamination. Fish length, PCB concentration of the sediment, and individual fish foraging habitat (exploitation of detrital versus planktonic carbon sources) explained 80% of within- and between-species variability observed in PCB concentrations. These results, obtained for species that have overlapping TPs and exploit different carbon sources, reveal that the important factor in fish PCB contamination is not only what fish consume, but also and essentially the feeding location.

© 2011 Elsevier Ltd. All rights reserved.

1. Introduction

The contamination of aquatic ecosystems by organic pollutants such as polychlorinated biphenyls (PCBs) can result in consumption advisories and bans.¹ In the Rhone River near the city of Lyon, France, PCB levels above the European health-based regulatory benchmark of 8 pg TEQ² g⁻¹ (wet weight) were measured in fish, resulting in a partial ban on fish consumption in 2007. Various studies have concluded that bioconcentration (i.e., accumulation of a contaminant through direct uptake from water) was the primary mechanism governing contamination of biota (Leblanc, 1995; Kucklick et al., 1996; Campfens and Mackay, 1997; Zaranko et al., 1997; Burreau et al., 2004), while other studies have suggested other mechanisms, such as biomagnification (i.e., an increase in contaminant concentration in the food chain) (Zaranko et al., 1997; Burreau et al., 2004). Nonetheless, it is commonly accepted that chemical

concentrations in organisms tend to increase with each step in the food chain, resulting in the concentration in organisms at the top of food chains to be many times greater than those in organisms at the bottom (Gobas et al., 1999; Walters et al., 2008).

Three types of factors are known to be important in the PCB bioaccumulation process (Borgå et al., 2004): physico-chemical, physiological, and trophic. Physicochemical factors include hydrophobicity, expressed as the K_{ow} value (octanol–water partition coefficient) of each PCB congener, which accounts for their solubility in water as well as in lipids. Physiological factors include lipid content (due to the PCB lipophilic property), body size (related, via allometry, to the chemical elimination rate because of an altered surface-to-volume ratio), and sex (Johnston et al., 2002). Many studies on PCB concentrations in aquatic organisms consider the influence of lipids by lipid-normalizing the concentration, but this practice is being debated (Hebert and Keenleyside, 1995). The effect of sex has been largely debated, with the assumption that the depletion of lipids associated with female spawning decreases accumulation of hydrophobic organic contaminants (Johnston et al., 2002; Borgå et al., 2004; Debruyne et al., 2004). Finally, trophic factors include individual diet preferences, habitat use (effects on bioaccumulation in terms of changes in exposure, both by

* Corresponding author. Tel.: +33 (0)4 72 20 87 97; fax: +33 (0)4 78 47 78 75.

E-mail address: christelle.lopes@cemagref.fr (C. Lopes).

¹ http://www.rhone-mediterranee.eaufrance.fr/usages-et-pressions/pollution_PCB/pcb-arretes-interdiction.php.

² TEQ = toxic equivalent quantity for dioxin, furan and dioxin-like PCBs.

water and dietary uptake) (Guildford et al., 2008; Walters et al., 2008), the length of the food chain, and thus trophic position (TP), as a consequence of the biomagnification processes at the individual level, as explained above (Gobas et al., 1999). All of these factors are likely to influence both between- and within-species variability in PCB concentrations. These factors have generally been studied independently in statistical models of bioaccumulation, and their relative contributions are less well known. Considering the ecological and economic impacts of fish consumption bans and advisories in riverine ecosystems, understanding the relative importance of the primary factors influencing bioaccumulation of PCBs in fish is critical for predicting and assessing risks to upper-trophic-level consumers, including humans.

For many years, stable isotope analysis (SIA) has been widely used to relate fish contamination and trophic factors, where TP is estimated deterministically from stable nitrogen isotopes (Post, 2002) and ultimate carbon sources from stable carbon isotopes (Vander Zanden and Rasmussen, 1996; Mazak et al., 1997; Kidd et al., 1998). Isotope mixing models have also been developed to quantify the respective contribution of a few sources (prey) to fish diet (Phillips, 2001; Phillips and Gregg, 2003). Studies combining PCB analysis and SIA have long been used, principally in lakes (Vander Zanden et al., 2000; Tarvainen et al., 2008). Such approaches have made it possible to identify the role played by TP in the variability of contamination between species, but so far have failed to explain inter-individual variability of contamination levels or the role played by habitat. Indeed, these approaches generally suffer from potential sources of uncertainty around the mean estimates of sources, such as in trophic fractionation factors, which were not adequately considered from a technical point of view (Jardine et al., 2006). We assume that improving the SIA within such ecotoxicological studies might help address the relationships between inter-individual variability in trophic behavior and in PCB contamination levels in fish.

The recent development of stable isotope mixing models based on Bayesian inference (Jackson et al., 2009; Xue et al., 2009; Parnell et al., 2010) is a major advance in SIA since these models take into account data variability and parameter uncertainty (Moore and Semmens, 2008; Xue et al., 2009). The role of diet preferences and habitat partitioning in PCB accumulation has not been adequately considered until now (Hebert and Haffner, 1991; Paterson et al., 2006), although PCB levels differ between habitats because of the chemical properties of the congeners. Indeed, PCB congeners are not all equally hydrophobic and distribute differently among the various aquatic compartments. The use of these Bayesian models in this context should therefore be very useful to determine the role played by characteristic habitats on fish contamination pathways.

Within these models, however, no statistical method has been developed to include data variability and parameter uncertainty in TP estimation. The TP within a single fish species might be highly variable between individuals, inducing differences in PCB bioaccumulation. Addressing the role of inter-individual variability in the TP estimated from SIA on fish PCB contamination therefore requires the development of an adequate statistical method. Using a Bayesian framework to estimate TP, the different biases related to the usual deterministic estimation can be taken into account (Post, 2002).

Hence, the primary goal of this paper is to identify PCB contamination pathways that explain between- and within-species variability in fish PCB concentrations observed in the Rhone River, using an improved SIA approach. The potential role played by feeding habitats was explored applying Bayesian isotope models, while a statistical method based on Bayesian inference was developed to estimate the fish TP from stable isotope data. The results were then integrated into a statistical predictive model that was developed to

establish the probability that the concentration of PCBs in a given fish species exceeds the health-based fish consumption threshold.

2. Materials and methods

2.1. Study sites

Fish, invertebrates, and sediments were collected at three sites in France along the Rhone River: (1) Lône de la Morte (MTE), the relative reference site upstream from Lyon and the first contaminated river reach; (2) Grand Large (GDL), a fluvial lake within the contaminated area and close to the city of Lyon; and (3) Ile du Beurre (BRE), a site downstream from Lyon. These sites were chosen for their expected sediment contamination according to the potential contamination sources (a factory specialized in PCB incineration between the two upstream sites and many industrial chemical sites between the two downstream sites). Furthermore, dams border each site and thus limit fish migration to too great a distance.

Sediment cores were collected at each site and radionuclide measurement was used to age the successive layers in each core. The seven iPCB congeners were quantified by the EUROFINs laboratory (Orléans, France) (see Supporting information [SI] for greater detail).

2.2. Fish and invertebrate sampling

Fish and invertebrates were collected at each study site (Table 1) and the fauna were inventoried by catching invertebrates with artificial substrates for an overview of the species living therein.

Three large, long-lived freshwater cyprinid species were chosen because (i) they are prone to PCB accumulation over a several-year period; (ii) although they exhibit a relatively similar TP, they have a plastic trophic behavior maximizing trophic variability between individuals (Philippart, 1977); and (iii) they have different diets and they exploit different habitats: the barbel *Barbus barbus* (Linnaeus, 1758) is a bottom feeder and lives in running rather than deep waters (Baras and Philippart, 1999), the European chub *Squalius cephalus* (Linnaeus, 1758) is more often found in standing and running waters and feeds in all aquatic compartments (top, middle and bottom waters) (Caffrey et al., 2008) and the bream *Abramis brama* (Linnaeus, 1758) lives in standing waters and is a bottom and middle feeder (Persson and Brönmark, 2002). Adult specimens were captured with nets or by electro-shocking (Table 1). To better control for within-species variability in PCB contamination and diets, only adults were selected in order to limit the effects of age status. Length (cm) and weight (g) were measured, sex was determined, and age was estimated by scalimetry (years). Stomach contents were analyzed in the laboratory.

Large corbicula *Corbicula fluminea* (Müller, 1774) (>2 cm) and *Pisidium tenuilineatum* (Stelfox, 1918) (Table 1), known to be preyed upon by these fish species, were used as primary consumers for the isotopic baselines. They were chosen because they have a known TP in the food web and they are characteristic of distinct carbon sources: large *Corbicula* feed deeply in sediment (detrital carbon source) (Mouthon, 2003) and *Pisidium* feed at the sediment surface (autochthonous carbon source) (Mouthon, 2008).

2.3. Sample analysis

Invertebrates were starved in the lab for 24 h to empty their digestive tract of residues that could distort the PCB and isotopic analyses. Fish fillets and invertebrates were weighed, frozen at –20 °C, freeze-dried, weighed again, and finely ground.

Table 1
Number of fishes and invertebrates collected on each site between August 2008 and January 2009 (N), with the distinction between females (♀) and males (♂) for fishes; mean size (±standard deviation); mean weight (±standard deviation); mean age (±standard deviation) and mean lipid content (±standard deviation).

	N	Size (cm)	Weight (g)	Age (year)	Lipid (%)
<i>Abramis brama</i>					
La Morte	7 (3♀ + 4♂)	53.11 ± 8.18	1636 ± 775	6.43 ± 1.51	9.24 ± 4.76
Grand-Large	15 (9♀ + 6♂)	54.14 ± 5.78	2025 ± 695	8.67 ± 3.96	22.85 ± 13.93
Ile du Beurre	17 (10♀ + 7♂)	52.45 ± 4.69	2009 ± 607	5.94 ± 2.34	28.34 ± 11.22
<i>Squalius cephalus</i>					
La Morte	20 (13♀ + 7♂)	40.02 ± 8.76	861 ± 500	6.3 ± 1.78	3.2 ± 1.15
Grand-Large	15 (6♀ + 9♂)	44.0 ± 5.80	1075 ± 457	5.27 ± 1.98	7.77 ± 3.89
Ile du Beurre	17 (12♀ + 5♂)	42.58 ± 7.67	1061 ± 533	5.82 ± 2.40	7.62 ± 3.91
<i>Barbus barbus</i>					
La Morte	11 (11♀ + 0♂)	52.1 ± 2.92	1215 ± 117	10 ± 1	5.85 ± 2.94
Grand-Large	15 (8♀ + 7♂)	54.7 ± 6.36	1710 ± 767	9.4 ± 2.32	13.62 ± 6.14
Ile du Beurre	5 (3♀ + 2♂)	56.6 ± 5.45	1853 ± 575	9.8 ± 3.56	17.65 ± 4.14
Invertebrates					
		<i>Pisidium</i>			<i>Corbicula</i>
La Morte		140			15
Grand-Large		160			13
Ile du Beurre		130			60

Lipid content (%) and concentrations of the seven iPCB congeners (ng g⁻¹ wet weight) were measured by the CARSO-LSEHL group (Lyon, France), according to USEPA standard 1668. Uncertainty of concentrations was evaluated at 20%.

Stable isotope analyses (carbon and nitrogen, expressed as $\delta^{13}\text{C}$ and $\delta^{15}\text{N}$) were performed using the IsoPrime spectrometer (MicroMass, Service Central d'Analyse, Solaize, France) coupled to a EuroEA 3024 analyzer. The uncertainty was 0.3‰. For invertebrate baselines, measurements were taken in triplicate.

The protocol for stomach content analysis and the fauna inventory is explained in SI.

2.4. Stable isotope data analysis

2.4.1. Stable isotope mixing models

We used the SIAR package (Parnell et al., 2010), which incorporates temporal and spatial variability in $\delta^{13}\text{C}$ and $\delta^{15}\text{N}$ in the stable isotope mixing model (SI, Eq. (C1)). Using a Bayesian approach, SIAR determines the probability distribution of each respective source contribution to the isotopic profiles of a consumer. For further detail, see Parnell et al. (2010). From the two invertebrate baselines (*Pisidium* being used as a baseline for autochthonous carbon and *Corbicula* for detrital carbon) (Mouthon, 2003, 2008), SIAR was applied to each fish species and each site to determine the probability distribution of the contribution of detrital carbon (dC) versus autochthonous carbon in supporting the food web.

At the individual level, SIAR could not be applied. Nevertheless, a simple stable isotope mixing model with two stable isotopes and two carbon sources can be solved analytically (SI, Eq. (C2)) in order to determine, for each individual, the percent contribution of detrital carbon (dC) versus that of autochthonous carbon in supporting an individual fish's secondary production.

2.4.2. Trophic position estimation

Post's equation (Post, 2002) with two baselines was used to estimate fish TP (SI, Eq. (C3)). To take into account $\delta^{15}\text{N}$ and $\delta^{13}\text{C}$ data variability and parameter uncertainties, we used Bayesian inference (prior information, software, number of iterations, etc. are presented in SI).

To estimate the individual TP, a bootstrapping method was used by drawing 10 000 parameter sets from the joint posterior distribution obtained for each species from each site. The samples of the three species were pooled at each site and the mean value of each parameter was used to report TP in the dual graph.

2.5. Statistical tests and predictive models

All statistical tests and models developed were performed using the R statistical computing program at a confidence level of α equal to 0.05. The normality of each variable was tested using a Shapiro test. Standard statistical tests were performed to analyze the data. A log-linear regression model was developed to explain fish PCB concentration ($\sum_{i=1}^7 \text{iPCB}$, shortened PCB_{fish}) on the basis of all available explanatory variables: size, TP, $\delta^{13}\text{C}$ or the percentage of detrital carbon exploited (dC), lipid content (LC), sex and site. The site effect was represented by the maximum PCB concentration in the sediment to which fish were exposed during their lifetime ($\sum_{i=1}^7 \text{iPCB}$ in sediment, abbreviated to PCB_{sed}), estimated by correlating fish age with sediment dating at each site. Beforehand, the correlation between explanatory variables was tested with a Spearman rank test. Backward stepwise regression was then carried out.

In the same way, a generalized linear model was developed to explain the probability p that the PCB content of fish tissue exceeds the health-based benchmark using the same explanatory variables.

3. Results

3.1. Contamination data, biometric analysis, stomach content analysis and fauna inventory

In accordance with the study's objective, the results of sediment contamination are only summarized here (see SI for further detail). The three sites appeared to be contaminated differently, the site upstream from Lyon being far less contaminated than the other two (confirming its suitability as a relative reference). During the past 10 years, the maximal PCB concentration measured in the sediment has been 6.26, 69.7 and 55.1 ng g⁻¹ dry weight at MTE, GDL and BRE, respectively (historical trends presented in SI, Fig. A1).

Fish PCB contamination differed among species (ANOVA, $p < 0.0001$) and among sites (ANOVA, $p < 0.0001$). The site upstream from Lyon was less contaminated than the two downstream sites and chub was consistently the least contaminated fish species (SI, Fig. D1). Fish contamination increased from upstream to downstream. This increase was expressed both as mean PCB concentrations and also as the number of individuals exceeding the health-risk-based threshold (SI, Fig. D1).

No correlation between PCB concentrations and sex, size, weight, lipid content, $\delta^{13}\text{C}$ and $\delta^{15}\text{N}$ was observed for any species

at any site. The lack of a correlation between lipid and PCB concentrations in fish indicates nonequilibrium conditions between individuals and their environment. As a consequence, we did not lipid-normalize PCB concentrations in fish.

Stomach content analysis, expressed as prey occurrences (SI, Fig. B1) and mean diets (SI, Fig. B2), showed differences among sites (suggesting a spatial heterogeneity concerning prey availability) and between species (indicating specific preferences). The chub and barbel diet spectra were broader than the bream spectrum, consistent with their opportunistic behavior. Nevertheless, low individual variability was observed from stomach contents within each species.

Finally, the inventory of the invertebrate fauna at MTE and GDL showed greater diversity at GDL than at MTE (SI, Fig. B3), suggesting a different prey availability between sites.

3.2. Stable isotope data analysis

3.2.1. Stable isotope mixing models

Using two end members, each representing a feeding habitat, the results of SIAR showed only two patterns among the nine data sets tested (Fig. 1). The first pattern (Fig. 1A), seen for bream and barbel at MTE and BRE, demonstrated that the two carbon sources were exploited equally by the fish. The second pattern (Fig. 1B), seen for chub at all three sites and bream and barbel at GDL, showed that autochthonous carbon sources were preferred to detrital carbon sources.

The application of these mixing models at the individual level showed that the PCB concentration in fish tissue increased with the proportion of carbon from a detrital source (SI, Fig. C1), especially at GDL.

3.2.2. TP estimation

Bayesian inference was performed on $\delta^{15}\text{N}$ and $\delta^{13}\text{C}$ data for each species at each site. Thin posterior distributions for all parameters were obtained (SI, Fig. C2), meaning that each data set was sufficiently informative to obtain a good estimation of each parameter. For all species, the most plausible value of the enrichment in $\delta^{15}\text{N}$ per trophic level, ΔN , was around 10% higher at all sites than the mean of 3.4‰ currently used (Post, 2002), except for the bream at BRE. The inferred TP showed similar values between species and between sites. Chub had the lowest mean TP at MTE, barbell had the lowest mean TP at GDL, and bream had the lowest mean TP at BRE. The empirical joint posterior distribution showed that TP was negatively correlated with ΔN , as expected (SI, Fig. C3).

The results of SIA (SI, Figs. C4 and C5) and their relation to PCB concentrations (SI, Figs. C1 and C6), are summarized in Fig. 2, illustrating differences not only in trophic levels (along the y-axis), but also in detrital carbon source exploitation (along the x-axis). Overall, it appeared that (i) the exploitation of detrital carbon increased with a decrease in TP; (ii) the difference in TP between species is not highly relevant, while the individual variability in TP could be strong at the same site (up to one trophic level), as in the exploitation of detrital carbon; and (iii) a contamination gradient was particularly marked at GDL according to the x-axis, the most contaminated fish being those exploiting the detrital carbon sources the most (SI, Fig. C1). On the other hand, no contamination gradient was observed according to TP (SI, Fig. C6).

3.3. Predictive statistical models

There was no significant difference in fish age between sites and the mean age was estimated at 7.3 years. The maximum PCB concentrations in the sediment to which fish were exposed during their life were 6.26, 69.7 and 55.1 ng g^{-1} dry weight at MTE, GDL and BRE, respectively (SI, Fig. A1). No correlation was found between all the explanatory variables.

The backward stepwise log-linear regressions carried out on PCB concentration levels, for all fish species and sites combined, showed no significant effect of sex, lipid content, or TP. The best model was obtained using only three significant explanatory variables—fish size, percentage of detrital carbon exploited and maximal PCB concentration in the sediment—which together explained 78% of the total variability:

$$\log_{10}(\text{PCB}_{\text{fish}}) = -0.569(\pm 0.167) + 0.036(\pm 0.003) * \text{size} \\ + 0.779(\pm 0.188) * \text{dC} + 0.591(\pm 0.065) \\ * \log_{10}(\text{PCB}_{\text{sed}}) \quad (1)$$

Fig. 3 presents the observed versus predicted contamination data obtained from Eq. (1). This representation is useful to evaluate the calibration of the predictive model to the data set and its utility from a risk assessment perspective, even though an independent data set is needed to validate the model's predictive capability. Only a few individuals fall within the quadrant representing an overestimation of the PCB contamination risk (the predicted value exceeds the measured value and exceeds the health-based benchmark). Similarly, only a few samples fall within the quadrant representing an underestimation of risk, i.e., the predicted concentrations are less than the health-based benchmark and the

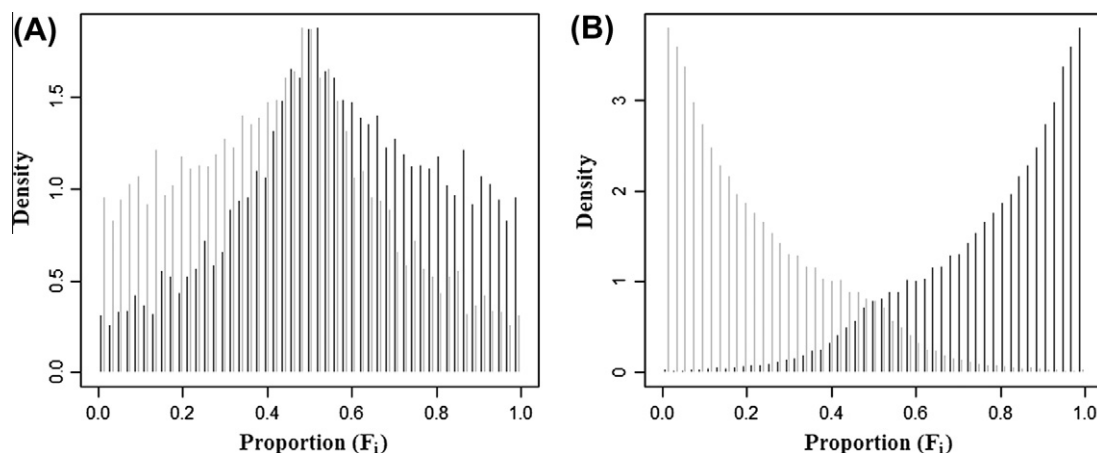


Fig. 1. Proportion distribution of autochthonous carbon (in black) and detrital carbon (in gray) in fish isotopic profiles determined by stable isotope mixing models. (A) Profile obtained for bream and barbel at the MTE and BRE sites. (B) Profile obtained for chub at the three sites and bream and barbel at site GDL.

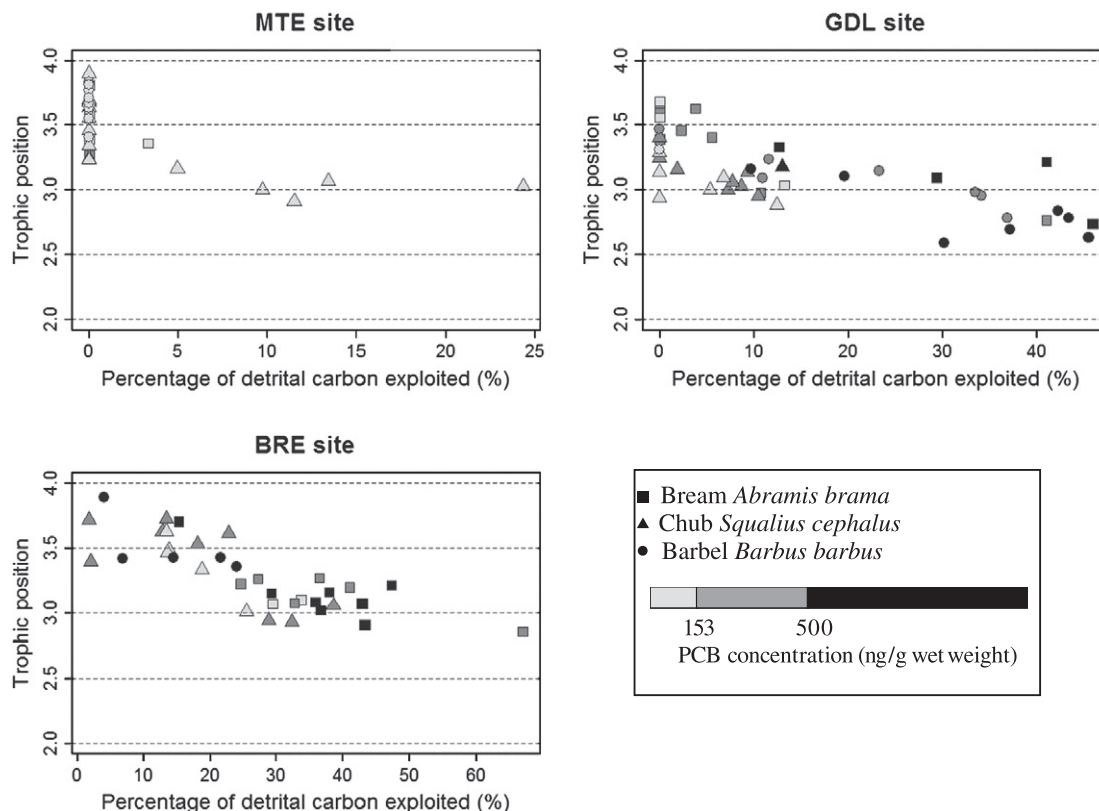


Fig. 2. Fish trophic position according to the percentage of detrital carbon exploited, with their level of PCB contamination. PCB concentrations are indicated relative to the health-risk benchmark (equal to $\sum_{i=1}^7 iPCB \approx 153 \text{ ng g}^{-1} \text{ ww}$ (Babut et al., 2009)) and three times this threshold.

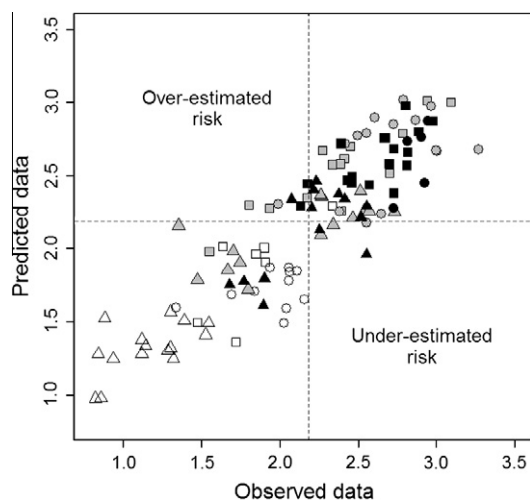


Fig. 3. Relationship between predicted (Eq. (1)) and observed PCB concentrations (in a log₁₀ basis) in breams (□), barbels (○) and chubs (△) at MTE (white), GDL (gray) and BRE (black). Dotted lines correspond to the health-risk benchmark of $153 \text{ ng g}^{-1} \text{ wet weight}$ for the sum of the seven indicator PCBs.

measured concentrations exceed it. The latter case is of greater concern from a risk assessment perspective. Nevertheless, for all species and all sites, only a few points are concerned (3/113), and for two of the three, the measurement uncertainty interval (PCB concentration uncertainty estimated at 20%) overlaps the regulatory threshold.

The best generalized linear model obtained is presented in SI.

4. Discussion

Many studies have highlighted the importance of chemical and biological factors in PCB accumulation by aquatic biota (Borgå et al., 2004). The factors leading to differential accumulation among species have become a major focus of ecotoxicology and environmental chemistry studies in the past few years (Borgå et al., 2004; Guildford et al., 2008; Walters et al., 2008; Gewurtz et al., 2009). There are a number of interacting factors determining within- and between-species variations in PCB concentrations and the importance of these factors varies both temporally and spatially. Many studies have shown that size, sex, TP and lipid content are important predictors of PCB concentrations in aquatic organisms (Kidd et al., 1998; Burreau et al., 2004; Missildine et al., 2005).

The use of stable isotope mixing models to describe diet behaviors showed that chub is the only species to predominantly feed on autochthonous carbon sources at the three sites, while bream and barbel showed a similar behavior only at GDL where invertebrate fauna is plentiful and widely available (as observed with the fauna inventory). Combined with observations from gut contents, these results are consistent with the opportunistic behavior of the chub. Moreover, we identified PCB contamination pathways that could explain the individual and between-species variability in PCB contamination levels. High within-species variability was observed for TP and habitat exploitation and PCB contamination levels, whereas gut contents were relatively similar. One reason for these observations might be that only adults, whose diet is assumed to be fixed, were sampled. The variability observed for isotope data and PCB concentrations could stem from different foraging habitats and/or individual life history. Moreover, we observed that sediments are historically more contaminated at GDL than at BRE, while fishes are more contaminated at BRE than at GDL and they specifically

exploit more detrital carbon sources at BRE than at GDL. Furthermore, we showed that PCB concentration increases with the exploitation of detrital carbon sources, confirming the results obtained by Berglund et al. (2005), who showed that individuals associated with the detrital pathway have higher PCB concentrations than those associated with the algae pathway. All these results confirmed that deposited sediment plays a central role in food-web contamination (Gewurtz et al., 2009), not only its contamination level, but also the ultimate carbon sources supporting the food web. The important factor in fish PCB contamination in the study sites examined was therefore not only what fish consume, but also and particularly the degree of contamination of the food consumed, suggesting that spatial gradients of contamination were more important than the type of food consumed and its trophic status.

The present study shows that combining isotopic and contaminant determination provides an efficient tool to assess the trophic transfer of pollutants such as PCBs within food webs and to analyze bioaccumulation processes. Nevertheless, this combined use implies that they have a similar rate of turnover in fish tissues. As mentioned by Perga and Gerdeux (2005), large consumers such as fish have tissue turnover rates ranging from months to years and their isotopic signature therefore represents their diet over a long period of time. The turnover of PCBs in tissues is different for each congener, given their different transformation rates. The congener profiles obtained here were always similar, with a predominance of congener 153, known to accumulate at the highest concentrations (Paterson et al., 2007). As a consequence, it is reasonable to think that for the temporal scale considered here, the values of stable isotopes and PCB concentrations used here can be compared.

Lau et al. (2009) showed that the isotopic signature of consumers and their foods varied with the season and shade conditions in streams, thus affecting the food-web baselines. Nevertheless, employing isotopic values for a single taxon as the baseline seems preferable to using the mean value of primary consumers, because it reduces the high degree of isotopic variability among taxa (Lau et al., 2009). The problem of seasonal and individual variability is considered in the Bayesian framework here by defining uncertainty around baseline isotope values, nitrogen enrichment per trophic level (commonly set at $\Delta N = 3.4\text{‰}$) and TP, and by defining the variability of isotopic values. This new approach demonstrated that: (i) the variability of the $\delta^{15}\text{N}$ values is higher than that of the $\delta^{13}\text{C}$ values, (ii) the chub has the highest $\delta^{15}\text{N}$ variability and the lowest TP, and (iii) ΔN was estimated to be higher than 3.4‰ . As a consequence, neglecting such sources of variability and uncertainties would result in an overall estimation of fish TP for the data studied.

Using all available explanatory variables available, we developed a predictive statistical model to explain PCB levels in freshwater river fishes and the probability of those levels exceeding the health-based benchmark. Fish body length, maximum concentration of PCBs in the sediment to which fish were exposed during their lifetime, and fish foraging behavior (and the associated diet) had significant effects, whereas sex, lipid content and TP were not significant predictors for these three fish species that have overlapping TPs and different ultimate carbon sources. It is clear that there are many interacting factors determining within-species variation in PCB concentrations and that the importance of each factor probably varies both temporally and spatially. Nevertheless, the role of sediment contamination in controlling fish contamination has been underlined and most mechanistic food-web models explicitly consider this compartment as a major exposure route (Morrison et al., 1997; Gewurtz et al., 2009). The variability in TP estimated from the present data set is too low to observe a significant relation between TP and PCB concentrations, probably be-

cause no piscivorous fish species were considered. The results obtained here are limited to the species considered and cannot be extrapolated to species at a higher trophic level. As a consequence, because of the small differences in TP between the three species studied here and the substantial differences in their feeding areas, the effect of biomagnification processes cannot be entirely excluded. Nevertheless, a correlation between TP and PCB concentrations has rarely been observed between individuals of the same species (Rasmussen et al., 1990). Until now, the fact that uncertainty was neglected in the deterministic estimation of TP could explain why no correlation was found. The Bayesian approach proposed here provides a more robust estimation and thus contributes support to TP's small effect on PCB levels.

The log-linear model developed here to predict PCB concentration in fish (Eq. (1)) can be used in a risk assessment perspective for fish consumption in the sense that there was an underestimation of risk in only 3% of cases. Nevertheless, it is clear that the amount of detrital carbon in the fish diet is not a convenient variable for environmental managers and that an independent data set is needed to validate the model's predictive capability.

Acknowledgements

The authors acknowledge Jacques Mouthon (Cemagref, Lyon) for his help on mollusk ecology, Bernard Motte (Cemagref, Lyon) for his contribution to fish and sediment data core sampling, Cédric Giroux (professional fisherman), who contributed to fish sampling, Roger Durand (a local fisherman), who greatly helped select valuable sediment sites and the CONIB (Centre of Nature Observation of Ile du Beurre) staff, especially its former director Georges Grenouillet. This project was funded by the Rhone-Mediterranean and Corsica Water Agency, the Rhone-Alpes Region, the Provence-Alpes-Côte d'Azur Region, and the Compagnie Nationale du Rhône (CNR) in the context of the Rhone ecological restoration plan, and ONEMA (National Office of Water and Aquatic Environments). We thank Linda Northrup for copyediting the text. We are grateful to the anonymous reviewers for their constructive comments.

Appendix A. Supplementary material

Supplementary data associated with this article can be found, in the online version, at [doi:10.1016/j.chemosphere.2011.08.011](https://doi.org/10.1016/j.chemosphere.2011.08.011).

References

- Babut, M., Miege, C., Villeneuve, B., Abarnou, A., Duchemin, J., Marchand, P., Narbonne, J.F., 2009. Correlations between dioxin-like and indicators PCBs: potential consequences for environmental studies involving fish or sediment. *Environ. Pollut.* 157, 3451–3456.
- Baras, E., Philippart, J.C., 1999. Adaptive and evolutionary significance of a reproductive thermal threshold in *Barbus barbus*. *J. Fish Biol.* 55, 354–375.
- Berglund, O., Nyström, P., Larsson, P., 2005. Persistent organic pollutants in river food webs: influence of trophic position and degree of heterotrophy. *Can. J. Fish. Aquat. Sci.* 62, 2021–2032.
- Borgå, K., Fisk, A.T., Hoekstra, P.F., Muir, D.C.G., 2004. Biological and chemical factors of importance in the bioaccumulation and trophic transfer of persistent organochlorine contaminants in arctic marine food webs. *Environ. Toxicol. Chem.* 23, 2367–2385.
- Burreau, S., Zebühr, Y., Broman, D., Ishaq, R., 2004. Biomagnification of polychlorinated biphenyls (PCBs) and polybrominated diphenyl ethers (PBDEs) studied in pike (*Esox lucius*), perch (*Perca fluviatilis*) and roach (*Rutilus rutilus*) from the Baltic Sea. *Chemosphere* 55, 1043.
- Caffrey, J.M., Acevedo, S., Gallagher, K., Britton, R., 2008. Chub (*Leuciscus cephalus*): a new potentially invasive fish species in Ireland. *Aquat. Invasions* 3, 201–209.
- Campfens, J., Mackay, D., 1997. Fugacity-based model of PCB bioaccumulation in complex aquatic food webs. *Environ. Sci. Technol.* 31, 577–583.
- Debruyne, A.M.H., Ikononou, M.G., Gobas, F.A.P.C., 2004. Magnification and toxicity of PCBs, PCDDs, and PCDFs in upriver-migrating pacific salmon. *Environ. Sci. Technol.* 38, 6217–6224.

- Gewurtz, S.B., Gandhi, N., Christensen, G.N., Evensen, A., Gregor, D., Diamond, M.L., 2009. Use of a food web model to evaluate the factors responsible for high PCB fish concentrations in Lake Ellasj  en, a high Arctic Lake. *Environ. Sci. Pollut. Res.* 16, 176–190.
- Gobas, F., Wilcockson, J.B., Russell, R.W., Haffner, G.D., 1999. Mechanism of biomagnification in fish under laboratory and field conditions. *Environ. Sci. Technol.* 33, 133–141.
- Guildford, S.J., Muir, D.C.G., Houde, M., Evans, M.S., Kidd, K.A., Whittle, D.M., Drouillard, K., Wang, X., Anderson, M.R., Bronte, C.R., Devault, D.S., Haffner, D., Payne, J., Kling, H.J., 2008. PCB concentrations in lake trout (*Salvelinus namaycush*) are correlated to habitat use and lake characteristics. *Environ. Sci. Technol.* 42, 8239–8244.
- Hebert, C.E., Haffner, G.D., 1991. Habitat partitioning and contaminant exposure in cyprinids. *Can. J. Fish. Aquat. Sci.* 48, 261–266.
- Hebert, C.E., Keenleyside, K.A., 1995. To normalize or not to normalize? Fat is the question. *Environ. Toxicol. Chem.* 14, 801–807.
- Jackson, A.L., Inger, R., Bearhop, S., Parnell, A., 2009. Erroneous behaviour of MixSIR, a recently published Bayesian isotope mixing model: a discussion of Moore & Semmens (2008). *Ecol. Lett.* 12, E1–E5.
- Jardine, T.D., Kidd, K.A., Fisk, A.T., 2006. Applications, considerations, and sources of uncertainty when using stable isotope analysis in ecotoxicology. *Environ. Sci. Technol.* 40, 7501–7511.
- Johnston, T.A., Fisk, A.T., Whittle, D.M., Muir, D.C.G., 2002. Variation in organochlorine bioaccumulation by a predatory fish; gender, geography, and data analysis methods. *Environ. Sci. Technol.* 36, 4238–4244.
- Kidd, K.A., Schindler, D.W., Hesslein, R.H., Muir, D.C.G., 1998. Effects of trophic position and lipid on organochlorine concentrations in fishes from subarctic lakes in Yukon Territory. *Can. J. Fish. Aquat. Sci.* 55, 869–881.
- Kucklick, J.R., Harvey, H.R., Ostrom, P.H., Ostrom, N.E., Baker, J.E., 1996. Organochlorine dynamics in the pelagic food web of Lake Baikal. *Environ. Toxicol. Chem.* 15, 1388–1400.
- Lau, D.C.P., Leung, K.M.Y., Dudgeon, D., 2009. What does stable isotope analysis reveal about trophic relationships and the relative importance of allochthonous and autochthonous resources in tropical streams? A synthetic study from Hong Kong. *Freshw. Biol.* 54, 127–141.
- Leblanc, G.A., 1995. Trophic level differences in the bioconcentration of chemicals – implications in assessing environmental biomagnification. *Environ. Sci. Technol.* 29, 154–160.
- Mazak, E.J., MacIsaac, H.J., Servos, M.R., Hesslein, R., 1997. Influence of feeding habits on organochlorine contaminant accumulation in waterfowl on the Great Lakes. *Ecol. Appl.* 7, 1133–1143.
- Missildine, B.R., Peters, R.J., Chin-Leo, G., Houck, D., 2005. Polychlorinated biphenyl concentrations in adult Chinook salmon (*Oncorhynchus tshawytscha*) returning to coastal and Puget Sound hatcheries of Washington State. *Environ. Sci. Technol.* 39, 6944–6951.
- Moore, J.W., Semmens, B.X., 2008. Incorporating uncertainty and prior information into stable isotope mixing models. *Ecol. Lett.* 11, 470–480.
- Morrison, H.A., Gobas, F., Lazar, R., Whittle, D.M., Haffner, G.D., 1997. Development and verification of a benthic/pelagic food web bioaccumulation model for PCB congeners in western Lake Erie. *Environ. Sci. Technol.* 31, 3267–3273.
- Mouthon, J., 2003. Longitudinal and temporal variations of density and size structure of *Corbicula fluminea* (Bivalvia) populations in the Saone and Rhone rivers (France). *Ann. Limnol. – Int. J. Limnol.* 39, 15–25.
- Mouthon, J., 2008. First study of the life cycle of *Psidium tenuilineatum* Stelfox, 1918 (Bivalvia, Sphaeriidae). *Basteria* 72, 45–56.
- Parnell, A., Inger, R., Bearhop, S., Jackson, A.L., 2010. Source partitioning using stable isotopes: coping with too much variation. *PLoS One* 5, e9672.
- Paterson, G., Drouillard, K.G., Haffner, G.D., 2006. An evaluation of stable nitrogen isotopes and polychlorinated biphenyls as bioenergetic tracers in aquatic systems. *Can. J. Fish. Aquat. Sci.* 63, 628–641.
- Paterson, G., Drouillard, K.G., Haffner, G.D., 2007. PCB elimination by yellow perch (*Perca flavescens*) during an annual temperature cycle. *Environ. Sci. Technol.* 41, 824–829.
- Perga, M.-E., Gerdeaux, D., 2005. “Are fish what they eat” all year round? *Oecologia* 144, 598–606.
- Persson, A., Br  nmark, C., 2002. Foraging capacities and effects of competitive release on ontogenetic diet shift in bream, *Abramis brama*. *Oikos* 97, 271–281.
- Philippart, J.C., 1977. Contribution    l’hydrobiologie de l’Ourthe. Dynamique des populations et production de quatre esp  ces de poissons cyprinid  s: *Brabus barbus*, *Leuciscus cephalus*, *chondrostoma nasus* et *leuciscus leusiscus*. Institut de zoologie. Universit   de Li  ge, Li  ge, Belgique, p. 225.
- Phillips, D.L., 2001. Mixing models in analyses of diet using multiple stable isotopes: a critique. *Oecologia* 127, 166–170.
- Phillips, D.L., Gregg, J.W., 2003. Source partitioning using stable isotopes: coping with too many sources. *Oecologia* 136, 261–269.
- Post, D.M., 2002. Using stable isotopes to estimate trophic position: models, methods, and assumptions. *Ecology* 83, 703.
- Rasmussen, J.B., Rowan, D.J., Lean, D.R.S., Carey, J.H., 1990. Food chain structure in Ontario lakes determines PCB levels in lake trout (*Salvelinus namaycush*) and other pelagic fish. *Can. J. Fish. Aquat. Sci.* 47, 2030–2038.
- Tarvainen, M., Vuorio, K., Sarvala, J., 2008. The diet of ruffe *Gymnocephalus cernuus* (L.) in northern lakes: new insights from stable isotope analyses. *J. Fish Biol.* 72, 1720–1735.
- Vander Zanden, M.J., Rasmussen, J.B., 1996. A trophic position model of pelagic food webs: impact on contaminant bioaccumulation in lake trout. *Ecol. Monogr.* 66, 451–477.
- Vander Zanden, M.J., Shuter, B.J., Lester, N.P., Rasmussen, J.B., 2000. Within- and among-population variation in the trophic position of a pelagic predator, lake trout (*Salvelinus namaycush*). *Can. J. Fish. Aquat. Sci.* 57, 725–731.
- Walters, D.M., Fritz, K.M., Johnson, B.R., Lazorchak, J.M., McCormick, F.H., 2008. Influence of trophic position and spatial location on polychlorinated biphenyl (PCB) bioaccumulation in a stream food web. *Environ. Sci. Technol.* 42, 2316–2322.
- Xue, D., Botte, J., De Baets, B., Accoe, F., Nestler, A., Taylor, P., Van Cleemput, O., Berglund, M., Boeckx, P., 2009. Present limitations and future prospects of stable isotope methods for nitrate source identification in surface- and groundwater. *Water Res.* 43, 1159–1170.
- Zaranko, D.T., Griffiths, R.W., Kaushik, N.K., 1997. Biomagnification of polychlorinated biphenyls through a riverine food web. *Environ. Toxicol. Chem.* 16, 1463.